

Leapfrog Bluetooth Module™

eureka™
water probes

Eureka's Bluetooth Module is the new, easy and versatile way to capture streaming water-quality data from the Manta+ sonde.

What is the Bluetooth Module?

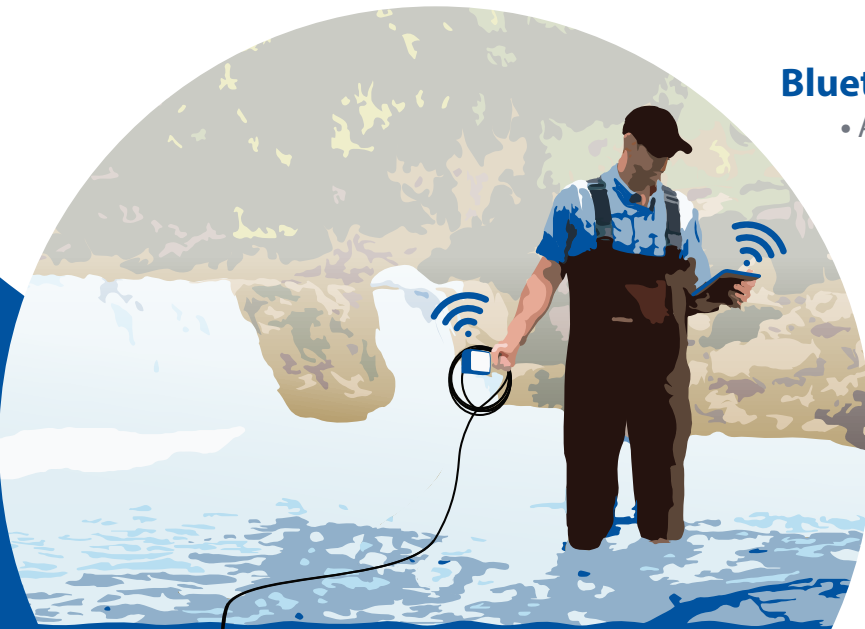
Eureka's Leapfrog™ is simply a unit that powers the Manta+ sonde and provides wireless communication to any Bluetooth-enabled display running Manta+ control software (Android, Windows™ for PC, or Windows™ Mobile). Since the Leapfrog™ connects to the end of the underwater cable, it is a great solution for a variety of monitoring projects. It works on up to 200 meters of cable, for wireless connection to a Manta+ sonde under water.

Suggested applications:

- Site to site spot checking
- Low-flow groundwater sampling with flow cells
- 2 man control, in a boat or on shore
- Wireless connection to Bluetooth-enabled lab computers - move freely anywhere within range
- Power pass-through cable reels

Bluetooth-enabled display options:

- Android™ Devices (Tablets, Smartphones)
 - Windows™ for PC/Laptop
- Windows™ Mobile for PDA's
- Amphibian2™ Handheld PC



Advantages:

- Works with a wide variety of display devices
- Supplies sonde power for over 20 hours of continuous use
- Utilize a Bluetooth-enabled device already available
- Reduces cost

Leapfrog Bluetooth Module™



Physical

- 3.75"W x 3.25"L x 2"D
- Weight: 1.2 lbs
- Durable Delrin shock-resistant design

Bluetooth Specs

- UART Bluetooth 2.0
- 2.4 GHz transceiver
- 2 dBm output typical
- -80 dBm sensitivity
- Up to 10m range

Battery

- 11.1 volt, 4.4Ah Li-ion

Includes

- AC wall charger
- 2-year warranty
- Quick Start guide

